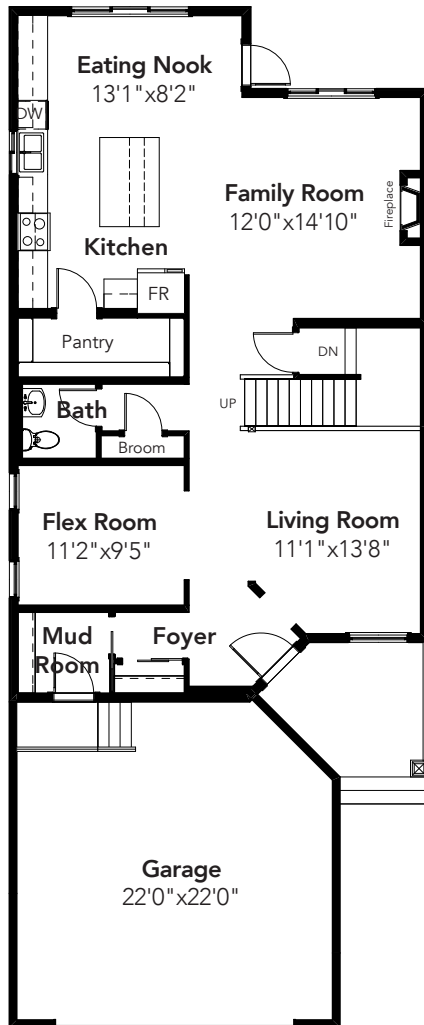


MELBOURNE



3 BEDS
2.5 BATHS
2504 SQ FT
28' WIDE



MAIN: 1190 SQ FT



SECOND: 1314 SQ FT

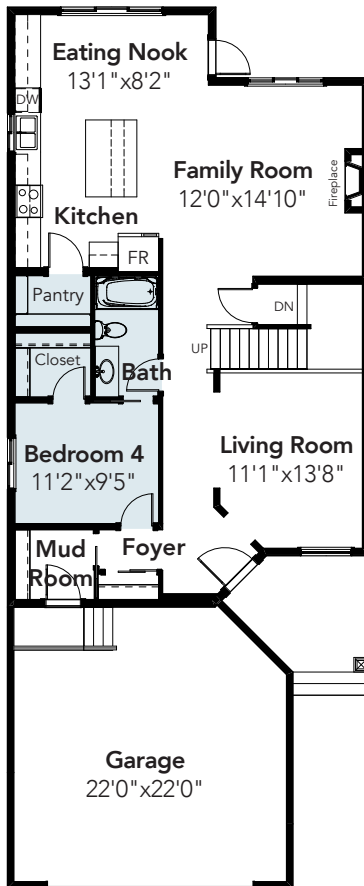


© 2017 Landmark Group of Companies Inc. All rights reserved. Any use or reproduction in whole or in part of these promotional materials without the prior written authorization of Landmark Group of Companies Inc. is strictly prohibited. Floor plans, specifications, pricing and dimensions shown are approximate and subject to change without notice. Artist rendering shown. Interior room dimensions are taken from inside of walls. Garage dimensions are taken from outside of walls. Revised October 30, 2017.

MELBOURNE

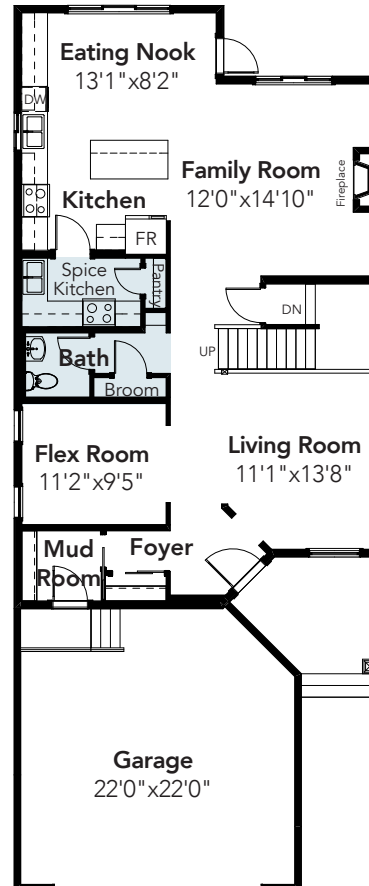
OPTIONS

MAIN FLOOR BEDROOM OPTION



MAIN: 1190 SQ FT

SPICE KITCHEN AND PANTRY OPTION



MAIN: 1190 SQ FT

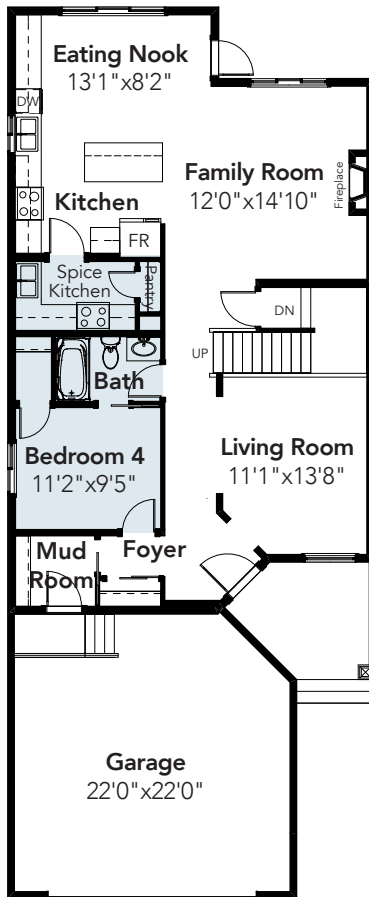


© 2017 Landmark Group of Companies Inc. All rights reserved. Any use or reproduction in whole or in part of these promotional materials without the prior written authorization of Landmark Group of Companies Inc. is strictly prohibited. Floor plans, specifications, pricing and dimensions shown are approximate and subject to change without notice. Artist rendering shown. Interior room dimensions are taken from inside of walls. Garage dimensions are taken from outside of walls. Revised October 30, 2017.

MELBOURNE

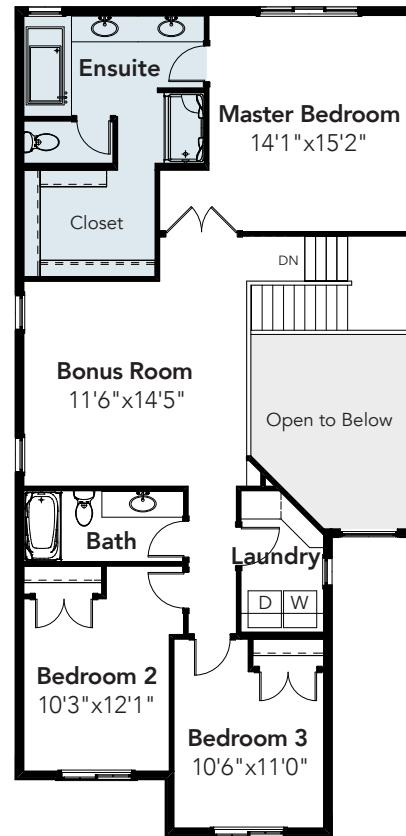
OPTIONS

MAIN FLOOR BEDROOM AND
SPICE KITCHEN OPTION



MAIN: 1190 SQ FT

ENSUITE OPTION

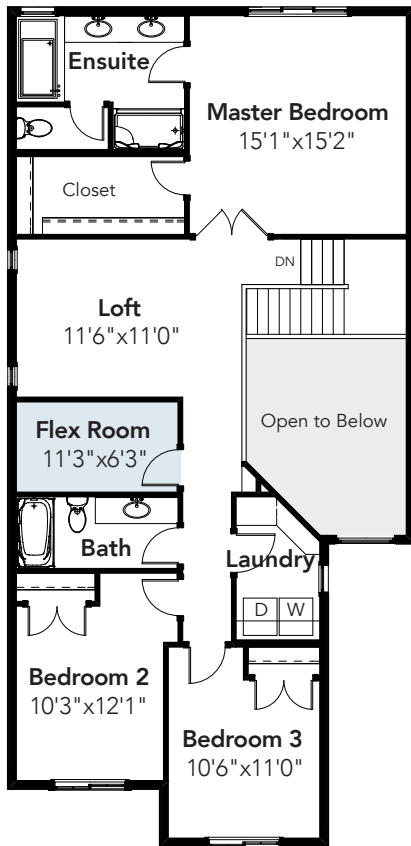


SECOND: 1314 SQ FT

MELBOURNE

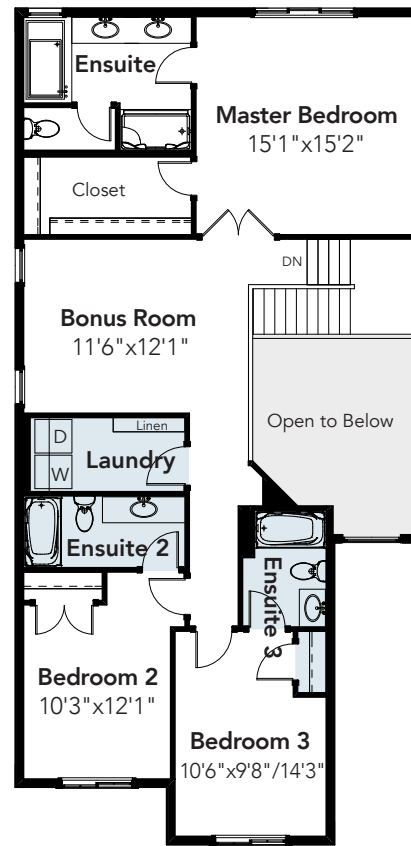
OPTIONS

FLEX ROOM OPTION



SECOND: 1314 SQ FT

SECONDARY ENSUITES OPTION

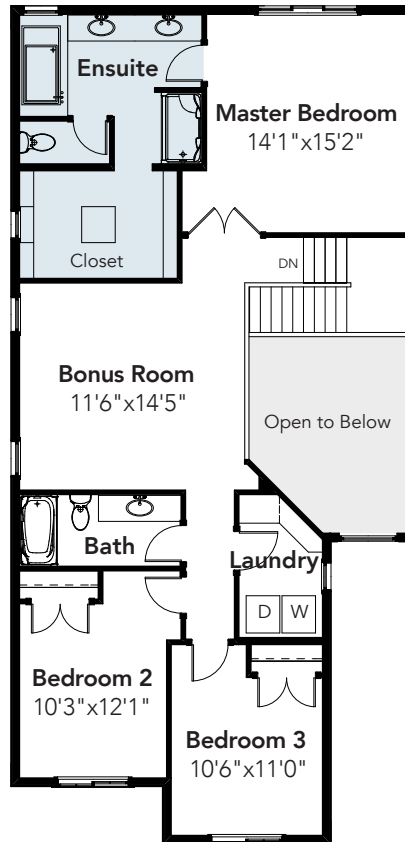


SECOND: 1317 SQ FT

MELBOURNE

OPTIONS

CLOSET OPTION



SECOND: 1314 SQ FT